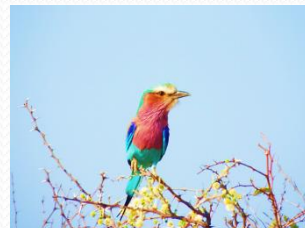




## Namibia Private self drive tour 2017

We always wanted to discover more of Africa. Namibia was on top of our "Africa-Bucket List" and so we decided to make it part of our big trip in 2017. We checked different options how to travel: staying in only one comfortable lodge and do day trips to see the wildlife, finding a travel agent to go on a private guided tour or doing as much as possible on our own.

That's what we came up with: renting a 4x4 car at the airport in **Windhoek**, booking us in into a nice **private wildlife resort** for three nights, driving up to **Etosha National Park** and staying there for another tree nights. To break the long journey to **Sossusvlei** we had a stop-over in the private wildlife resort we had been before. Next day we had an adventurous trip through mountain areas before we arrived in the fascinating world of the huge sand dunes. After being in the desert for three nights we went back to Windhoek to catch our flight back to Frankfurt. It was one of our most impressive journeys we have done so far. **For more information about this trip and the accommodation we used please contact us: [info@sghtravel.com](mailto:info@sghtravel.com)**







## Namibia

### Accommodation

#### Goche Ganas (near Windhoek)



#### Goche Ganas Lodge



(out of 5 stars)

On the hotel's website it is written:

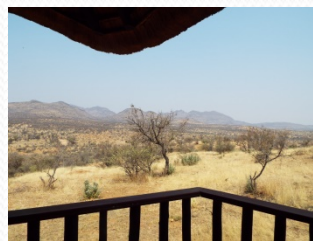
Situated a mere 29 kilometers south east from Windhoek on a hilltop overlooking a spectacular landscape, GOCHE GANAS is a luxury lodge offering a unique combination of wildlife, nature and wellness experiences. With 25 different wildlife species located on a 6000 hectare Nature Reserve, game drives and walking activities are welcomed as an enriching experience. Wellness facilities and treatments of a world class standard ensure a renewal of mind, body and spirit.

**Our verdict:** What a wonderful experience to stay at Goche Ganas. We stayed at this lovely place three nights after we arrived in Namibia and another night as a stop-over on the way from Etosha to Sossusvlei. The setting of the Lodge is spectacular. The view of all the guest villas, the restaurant and the outdoor swimming pool is fantastic. It's not only the beautiful scenery we could even watch the wildlife passing by. The food in the restaurant is delicious and the staff work very hard to fulfill the highest expectations. The Spa area is beautiful and the massages we had with Rauna have been a real treat. We did at least once a day a safari with Goche Ganas guides and we have to say this is something not to be missed. The wildlife is amazing and the guides are very knowledgeable. We saw lots of giraffes, wildebeests, ostriches, springboks, monkeys, oryx, zebras, beautiful birds and the new born rhino with his mother. We stayed in two different villas. Both very well maintained, nicely decorated, very comfortable and as mentioned before with a spectacular view.

**Price indicator:** 340 -460 USD/night/room incl. breakfast and dinner- depending on room and season

**Location: 10 room: 9 sleep quality: 9 food: 9 service: 9 cleanliness: 9 value: 9 Total: 9.1**

scale of one to ten: 1 poor <-----> 10 perfect





## Namibia

### Accommodation

#### Mushara Lodge (Etosha NP)



#### Mushara Lodge

★★★★★ + (out of 5 stars)

On the hotel's website it is written:

Located just 8 km from the Von Lindequist Gate on the eastern boundary of Etosha National Park, Mushara Lodge is an ideal overnight stop for visitors to the game reserve. Ten well-spaced thatched chalets are arranged in horseshoe shape around the swimming pool. All the chalets and individual rooms are extremely spacious and equipped with air-conditioning, mosquito net, mini-bar, safe, tea and coffee station, sockets for charging storage batteries and direct telephone.

**Our verdict:** During our three nights at Mushara Lodge we enjoyed the location of the Lodge to Etosha Park entrance, the lovely little cottages, the very tasty food (and the friendliness of the people working at the lodge). Our cottage offered enough space for two people, was equipped with everything we needed and was decorated beautifully with Namibian art work. We enjoyed the morning safaris with Imelda, the Lodge's own guide and saw a lot of wild animals including lions, elephants, giraffes, wildebeests, zebras etc.

If we would have to recommend a Lodge close to Etosha National Park it would be Mushara Lodge

**Price indicator:** 150 -650 USD/night/room incl. breakfast and dinner- depending on room and season

**Location: 9 room: 9 sleep quality: 9 food: 9 service: 8 cleanliness: 8 value: 8 Total: 8,6**

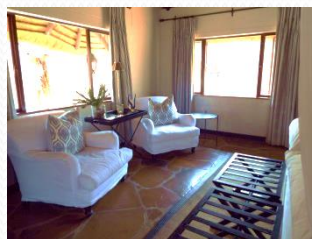
scale of one to ten: 1 poor <-----> 10 perfect



Our little chalet



Bedroom



Living area



Ready for the safari



Lounge and bar



Restaurant



Restaurant ready for dinner



Hors d'œuvre froid





## Namibia

### Accommodation

#### Le Mirage (Sossusvlei)



#### Le Mirage, Sossusvlei



(out of 5 stars)

On the hotel's website it is written:

Le Mirage Resort & Spa is one of the most unique establishments in the Sossusvlei area. It is situated at 21 km from the Sesriem gate to Sossusvlei. This makes it one of the lodges closest to the Sossusvlei and the ideal place to stay when you want to visit the highest dunes in the world! Le Mirage resort and spa offers very spacious rooms with large beds, a mini bar and coffee and tea facilities. The thick rock walls of the building will keep your room nice and cold and protect you from the harsh desert outside.

**Our verdict:** We stayed three nights at Le Mirage Resort. The location of the resort is perfect as a starting point to visit Sossusvlei. The hotel has a total of 29 rooms and is often used by bigger tour groups, which is something we normally try to avoid. On the other hand it is difficult to find quality accommodation (not in a tented camp) in this area. The resort offers comfortable rooms (plumbing in our room needed an update). The food at the buffet breakfast and the 5 course dinner was nice and well presented. The spa area and the massages they offer comply with international standards. The resort offers interesting guided tours to see the highlights of Sossusvlei and the Sesriem Canyon.

**Price indicator:** 325 - 350USD/night/room incl. breakfast and dinner- depending on room and season

**Location: 9 room: 7 sleep quality: 8 food: 8 service: 8 cleanliness: 8 value: 7 Total: 7.9**

scale of one to ten: 1 poor <-----> 10 perfect

